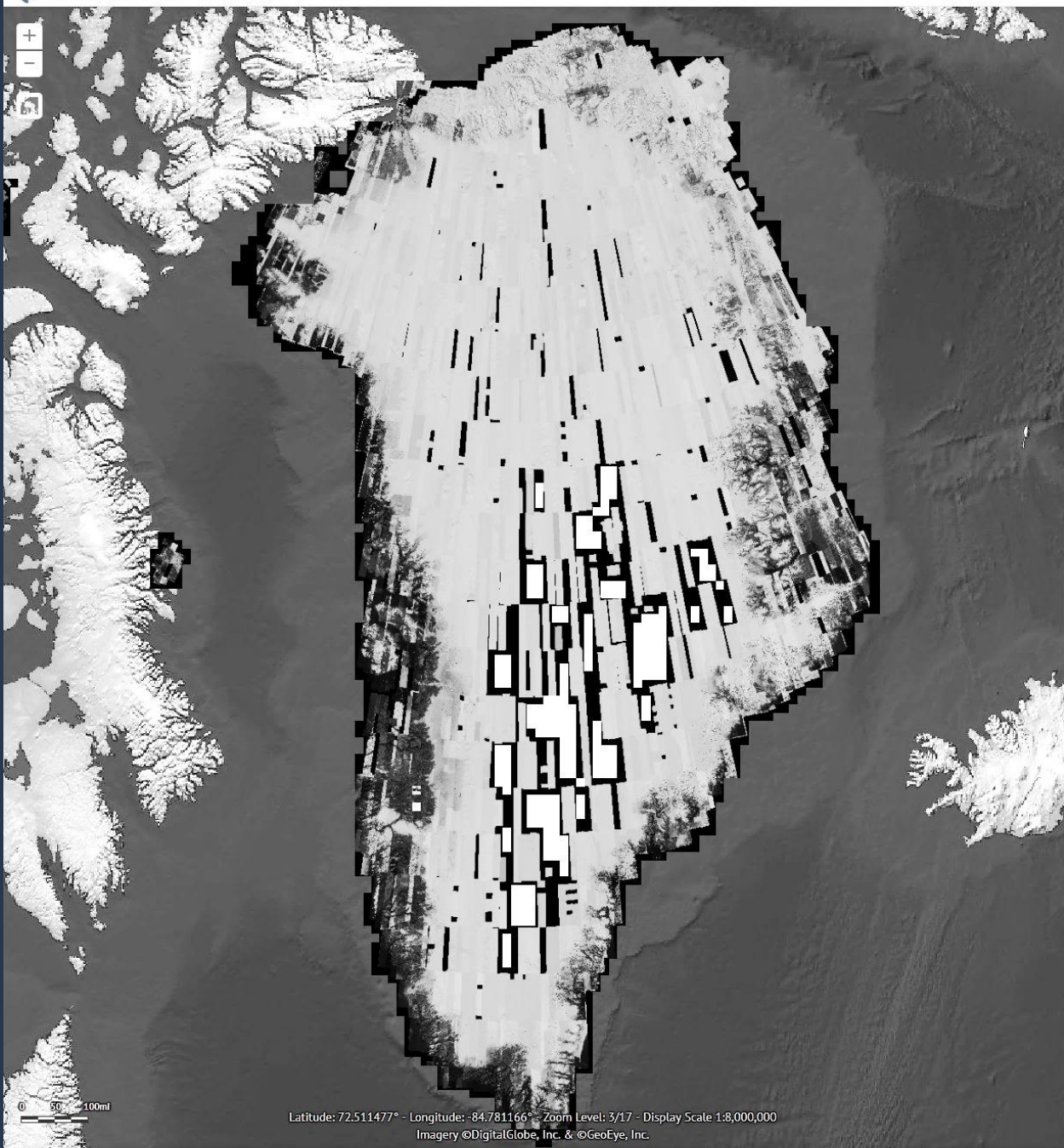


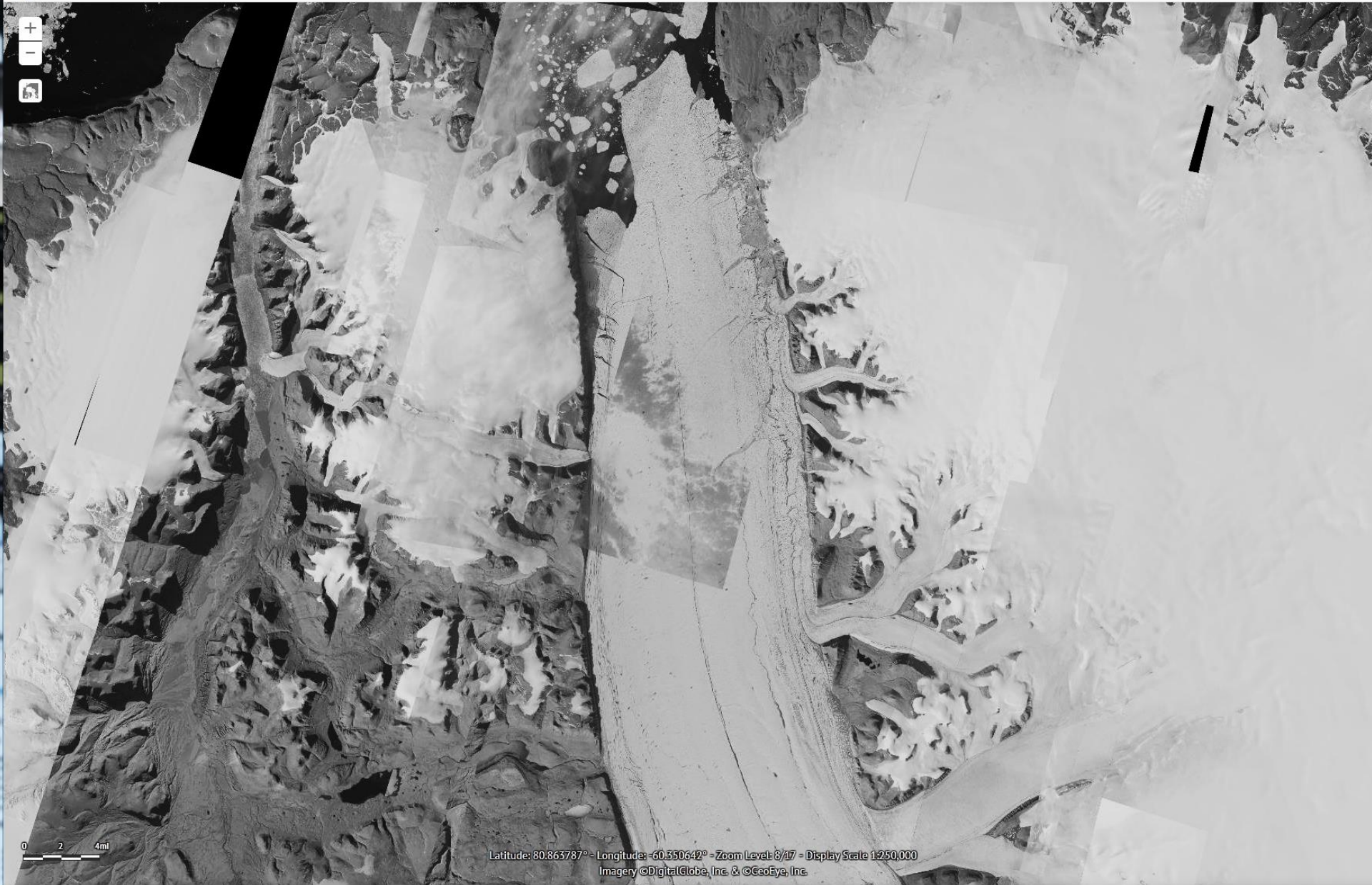
PGC Goods and Services

Paul Morin
Polar Geospatial Center
University of Minnesota





Latitude: 72.511477° - Longitude: -84.781166° - Zoom Level: 3/17 - Display Scale 1:8,000,000
Imagery ©DigitalGlobe, Inc. & ©GeoEye, Inc.



Latitude: 80.863787° - Longitude: -60.550642° - Zoom Level: 8/17 - Display Scale 1:250,000
Imagery ©DigitalGlobe, Inc. & ©GeoEye, Inc.



0 300 600m

Latitude: 30.811477° - Longitude: -60.309832° - Zoom Level: 13/17 - Display Scale 1:8,000



Uummannaq
Greenland

NEEM

Greenland

Image Date: June 18, 2009

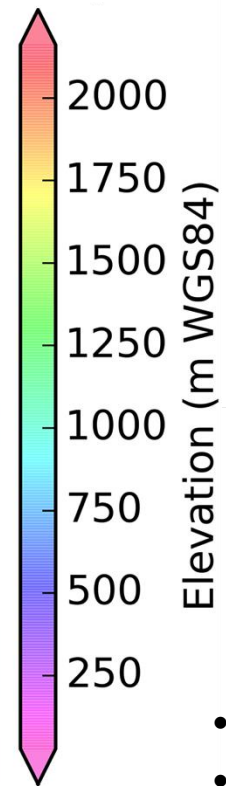
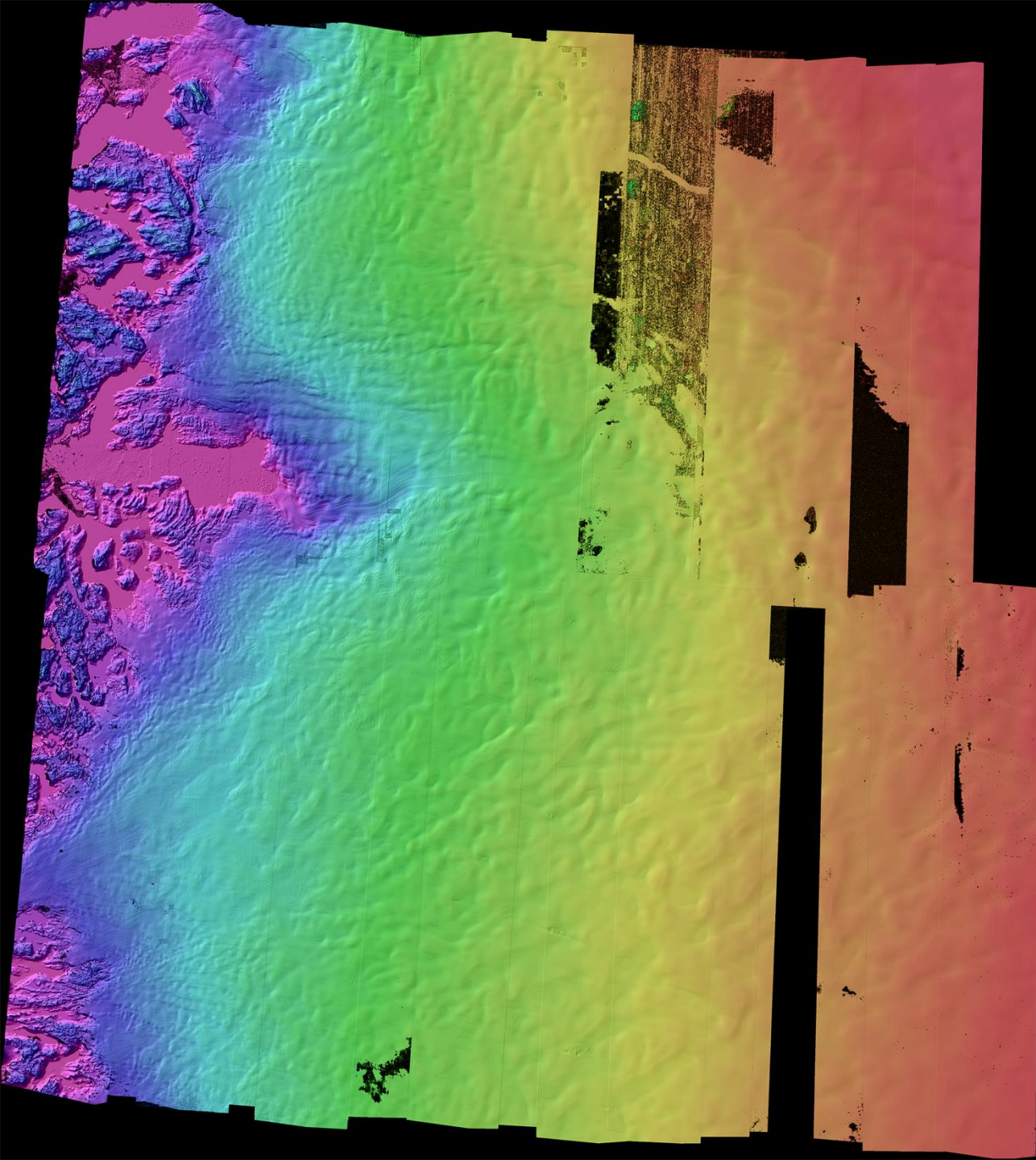


Summit Station

Greenland

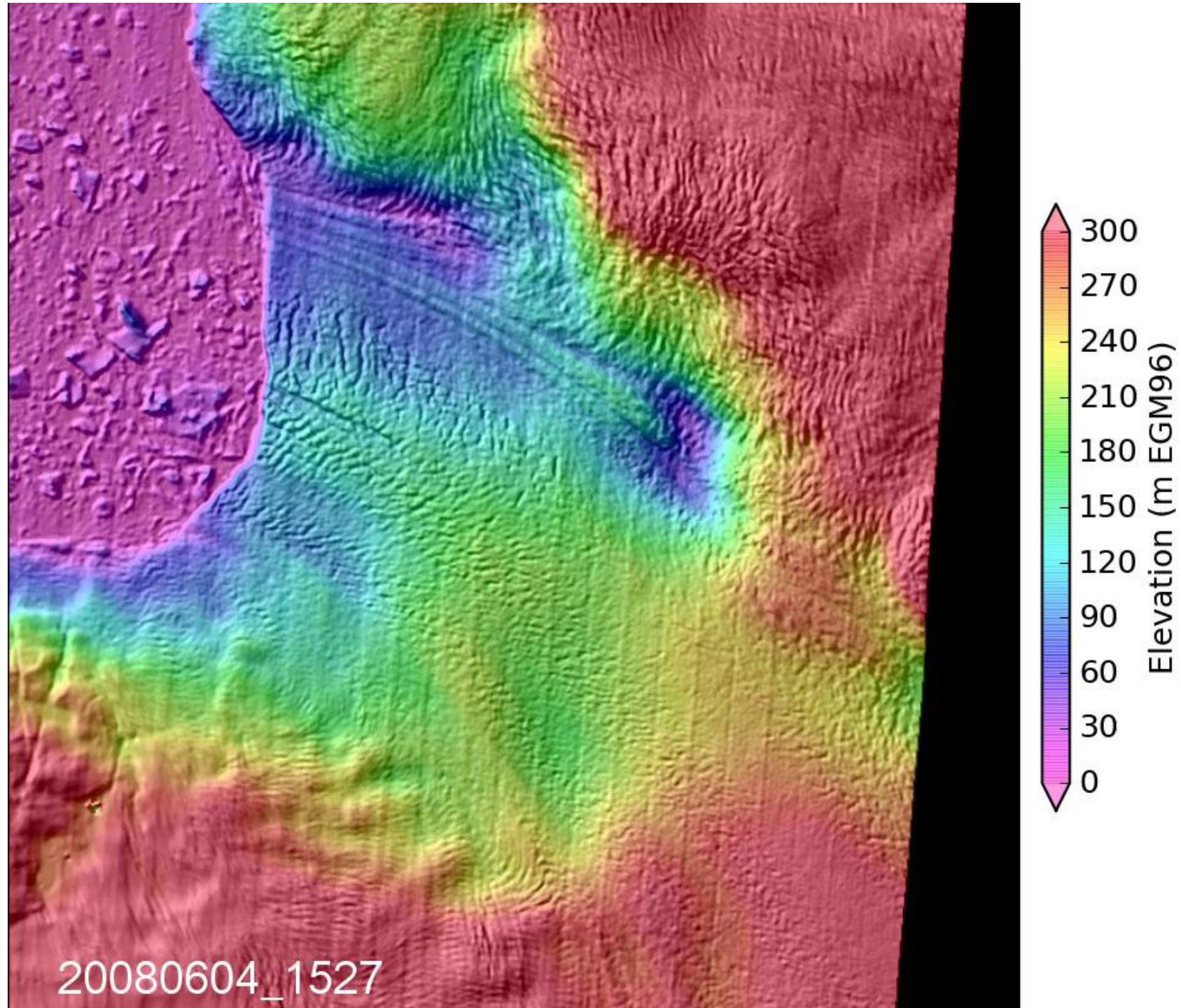
Image Date: May 28, 2011

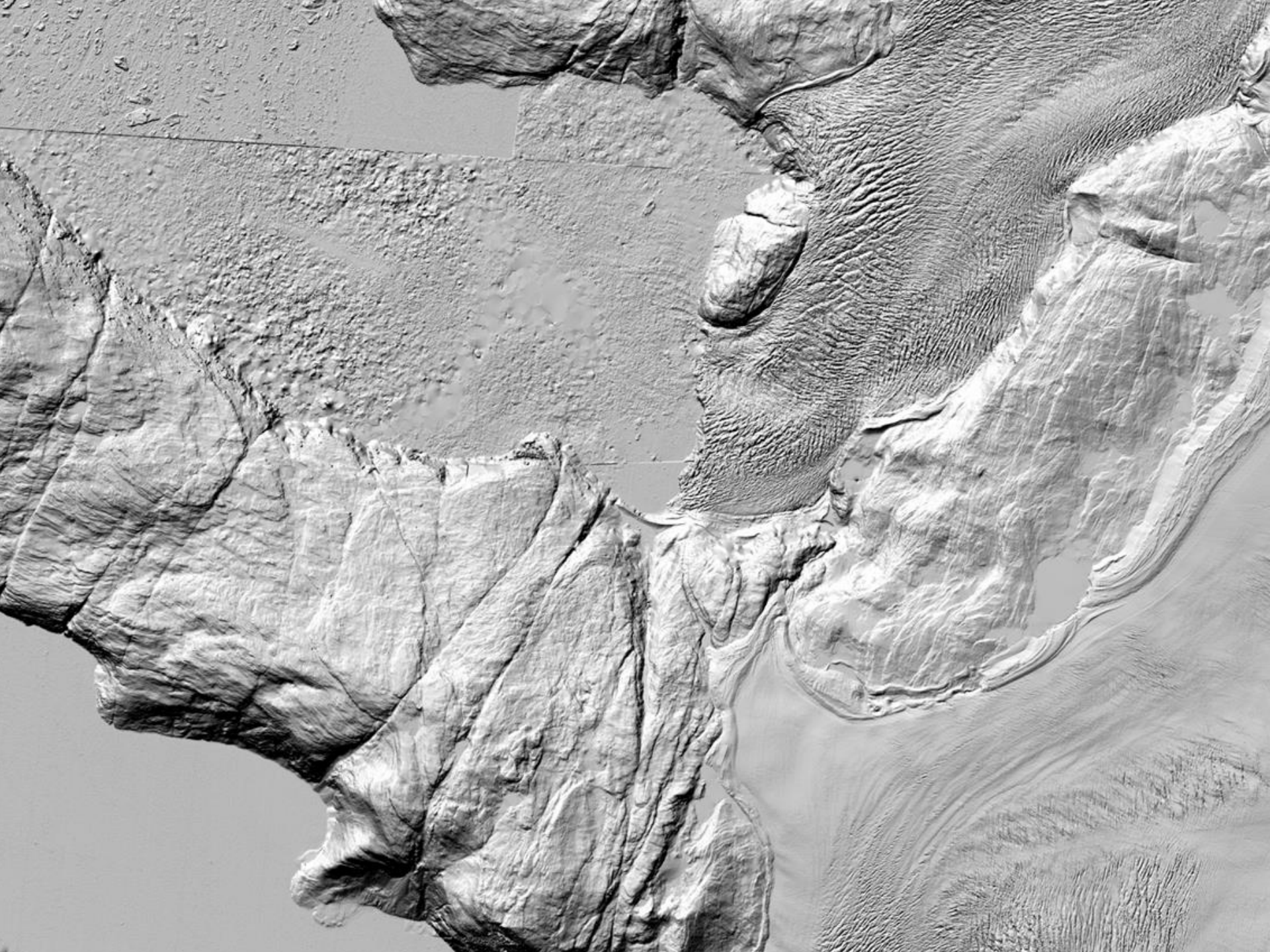




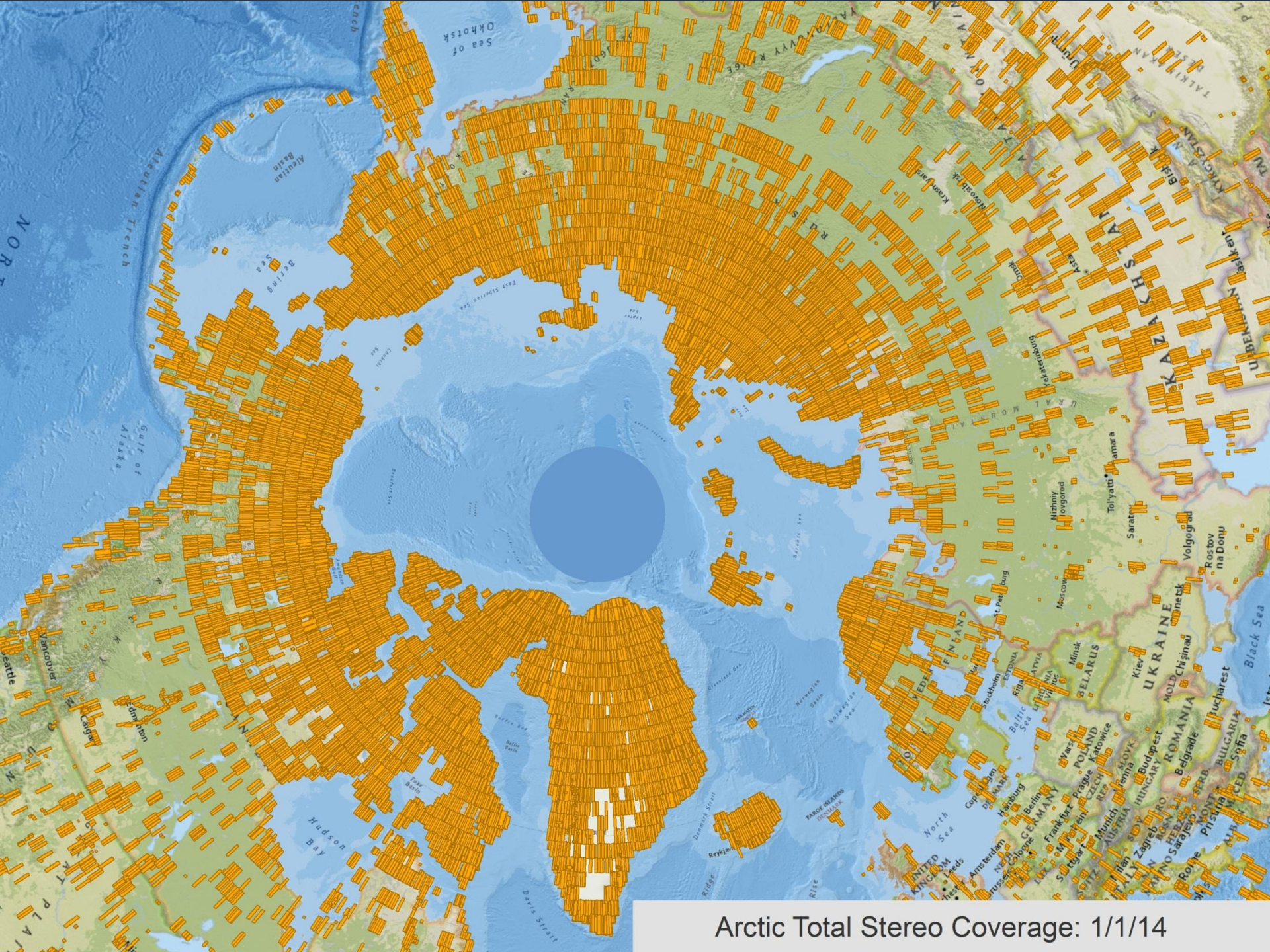
- 2009-2013
- 142 DEMs
- 4 m/px
- 220x240 km
- Gaps: clouds & saturated img

20 km









Arctic Total Stereo Coverage: 1/1/14

Archive includes 5
satellites
New tasking is WV-1 and
2

Worldview 2

DIGITALGLOBE

Geoeye

Quickbird

Ikonos

Worldview 1

Take away

- Can see and map anywhere in the arctic at 50cm resolution
- Elevation models on-demand
- Mono viewer with orthoed base imagery available for Greenland. Geospatial services on request



www.pgc.umn.edu

@polargeospatial